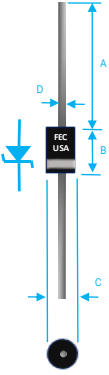


500W LOW CAPACITANCE TRANSIENT VOLTAGE SUPPRESSOR



Dim.	Value in [mm]	
	Min.	Max.
A	1.000[25.40]	—
B	0.230[5.84]	0.300[7.62]
C	0.304[7.64]	0.440[11.18]
D	0.028[0.71]	0.034[0.86]

PRODUCT FEATURES

1. FLAMMABILITY CLASSIFICATION 94V-0
2. DIFFUSED JUNCTION
3. LOW JUNCTION CAPACITANCE
4. CASE: MOLDED PLASTIC, DO15
5. DIMENSIONS IN INCHES AND (MILLIMETERS)
6. POLARITY: INDICATED BY CATHODE BAND
7. WEIGHT: 0.4 GRAMS
8. MIL-STD-202, METHOD 208
9. ROHS

MAXIMUM RATINGS AND ELECTRICAL CHARACTERISTICS RATINGS AT 25°C AMBIENT TEMPERATURE UNLESS OTHERWISE SPECIFIED STORAGE AND OPERATING TEMPERATURE RANGE -55°C TO + 150°C

RATINGS	SYMBOL	VALUE	UNITS
REVERSE RECOVERY TIME (IF/IR=0.1A/0.3A)	trr	Max. 500	nS
MAXIMUM JUNCTION CAPACITANCE AT 0 VOLTAGE	Cj	20	pf
LEAKAGE CURRENT (VR=VRM)	IR	Max. 5.0	mA
PEAK SURGE REVERSE POWER (Non-repetitive 10/1000 mS)	PRSM	500	W

PART NUMBER	MAX BREAK DOWN VOLTAGE VBR(V)	PK REV VOLTAGE VRWM (V)	MAX REV LEAKAGE IR(μA)	MAX PK PULSE CURRENT IPP(A)	MAX CLAMPING VOLTAGE VC(V)
SAC5.0	7.6	5	300	44	10
SAC6.0	7.9	6	300	41	11.2
SAC7.0	8.33	7	300	38	12.6
SAC8.0	8.89	8	100	36	13.4
SAC8.5	9.44	8.5	50	34	14
SAC10	11.1	10	5	29	16.3
SAC12	13.3	12	5	25	19
SAC15	16.7	15	5	20	23.6
SAC18	20	18	5	15	28.8
SAC22	24.4	22	5	14	35.4
SAC26	28.9	26	5	11.1	42.3
SAC30	33.3	30	5	10	48.6
SAC36	40	36	5	8.6	60
SAC45	50	45	5	6.8	77
SAC50	55.5	50	5	5.8	88

RATING AND CHARACTERISTIC CURVES

SYMBOL

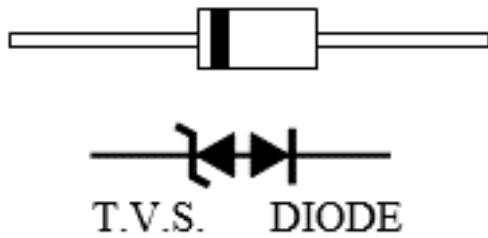
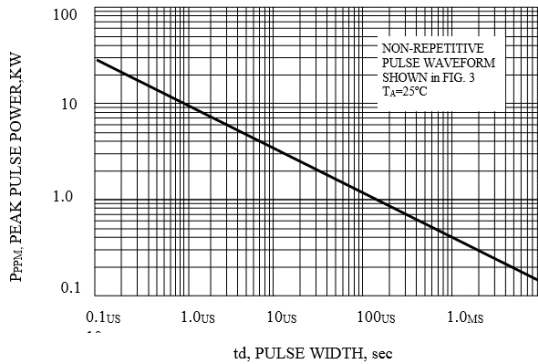
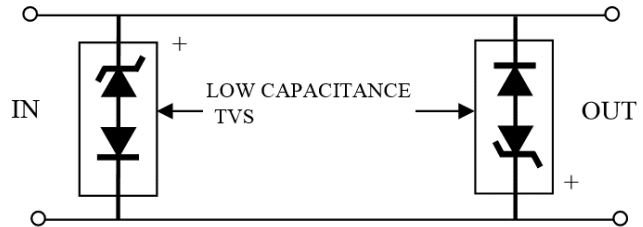


FIG. 1 - PEAK PULSE POWER RATING CURVE



AC Line Protection Application



APPLICATION NOTE : Devices must be used with two units in parallel, opposite in polarity as shown in circuit for AC Signal Line protection

FIG. 2 - PULSE DERATING CURVE

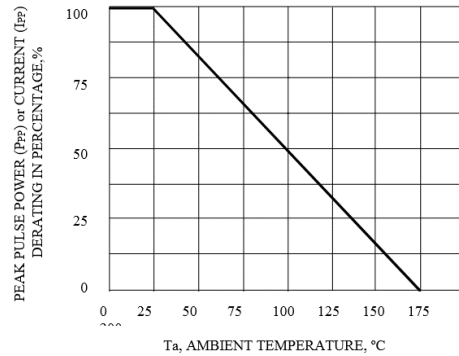


FIG. 3 - PULSE WAVEFORM

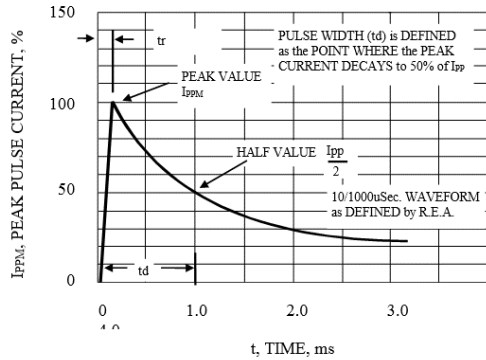
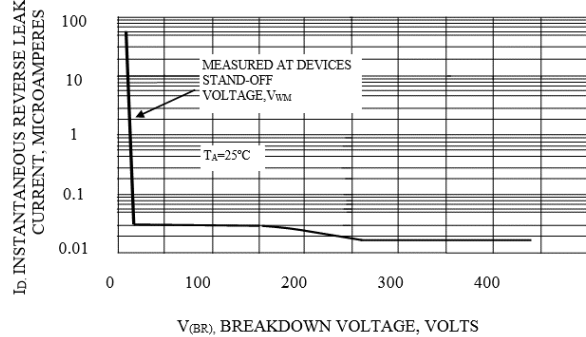


FIG. 4 - TYPICAL REVERSE LEAKAGE CHARACTERISTICS





SAC5.0 THRU SA50 SPECIFICATIONS

Rev. A

FIG. 5 - MAXIMUM NON-REPETITIVE PEAK FORWARD SURGE CURRENT UNIDIRECTIONAL ONLY

