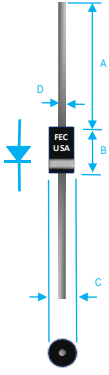


1A ULTRA FAST RECOVERY RECTIFIER

 <table border="1" style="margin-left: auto; margin-right: auto;"> <thead> <tr> <th rowspan="2">Dim.</th> <th colspan="2">Value in [mm]</th> </tr> <tr> <th>Min.</th> <th>Max.</th> </tr> </thead> <tbody> <tr> <td>A</td> <td>1.000[25.40]</td> <td>—</td> </tr> <tr> <td>B</td> <td>0.86[4.22]</td> <td>0.205[5.2]</td> </tr> <tr> <td>C</td> <td>0.080[2.03]</td> <td>0.407[12.72]</td> </tr> <tr> <td>D</td> <td>0.028[0.71]</td> <td>0.034[0.86]</td> </tr> </tbody> </table>	Dim.	Value in [mm]		Min.	Max.	A	1.000[25.40]	—	B	0.86[4.22]	0.205[5.2]	C	0.080[2.03]	0.407[12.72]	D	0.028[0.71]	0.034[0.86]	PRODUCT FEATURES <ol style="list-style-type: none"> 1. FLAMMABILITY CLASSIFICATION: 94V-0 2. HIGH SURGE CURRENT CAPABILITY 3. ULTRA FAST SWITCHING 4. CASE: TRANSFER MOLDED D0-41 5. POLARITY: INDICATED BY CATHODE BAND 6. WEIGHT : 0.34 GRAMS 7. TERMINALS : PER MIL-STD-202, METHOD 208 8. PULLING TEST: 2.3 KG 9. ROHS
Dim.		Value in [mm]																
	Min.	Max.																
A	1.000[25.40]	—																
B	0.86[4.22]	0.205[5.2]																
C	0.080[2.03]	0.407[12.72]																
D	0.028[0.71]	0.034[0.86]																

MAXIMUM RATINGS AND ELECTRICAL CHARACTERISTICS RATINGS AT 25°C AMBIENT TEMPERATURE UNLESS OTHERWISE SPECIFIED STORAGE AND OPERATING TEMPERATURE RANGE -55°C TO + 150°C. SINGLE PHASE, HALF WAVE, 60 HZ, RESISTIVE OR INDUCTIVE LOAD. FOR CAPACITIVE LOAD, DERATE CURRENT BY 20%

RATINGS	SYMBOL	VALUE	UNITS
MAXIMUM AVERAGE FORWARD RECTIFIED CURRENT 0.375"(9.5mm) LEAD LENGTH @ TA=55°C	IO	1	A
PEAK FWD SURGE CURRENT, 8.3ms HALF SINE-WAVE SUPERIMPOSED ON RATED LOAD	IFSM	30	A
TYPICAL THERMAL RESISTANCE (NOTE 2)	Rqja	50	°C/W
MAXIMUM REVERSE CURRENT @ 25°C	IR	5	uA
MAXIMUM REVERSE CURRENT @ 100°C	IR	50	uA

1. Cj MEASURED @ 1 MHZ AND APPLIED REVERSE VOLTAGE OF 4.0 VOLTS
2. BOTH LEADS ATTACHED TO HEAT SINK 20x20x1t(mm) COPPER PLATE @ LEAD LENGTH 5mm
3. REVERSE RECOVERY TEST CONDITIONS: IF=0.5A, IR=1.0A, IRR=0.25A
4. MAXIMUM FORWARD VOLTAGE @ Io DC

PART NUMBER	MAX RECURRENT PK REV VOLTAGE VRRM (V)	MAX RMS VOLTAGE VRMS (V)	MAX DC BLOCKING VOLTAGE VDC (V)	MAX FWD VOLTAGE VF (V)	TYPICAL JUNCTION CAP CJ (PF)	MAX REVERSE RECOVERY TIME nS
FUF4001	50	35	50	1.3	20	50
FUF4002	100	70	100	1.3	20	50
FUF4003	200	140	200	1.3	20	50
FUF4004	400	280	400	1.3	20	50
FUF4005	600	420	600	1.7	15	75
FUF4006	800	560	800	1.7	15	75
FUF4007	1000	700	1000	1.7	15	75

RATING AND CHARACTERISTIC CURVES

FIG. 1-TEST CIRCUIT DIAGRAM AND REVERSE RECOVERY TIME CHARACTERISTIC

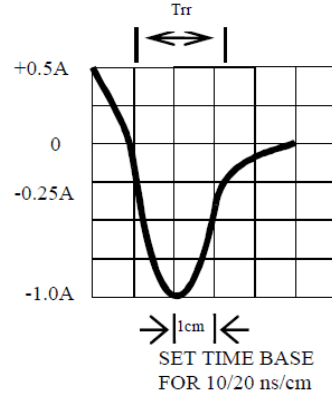
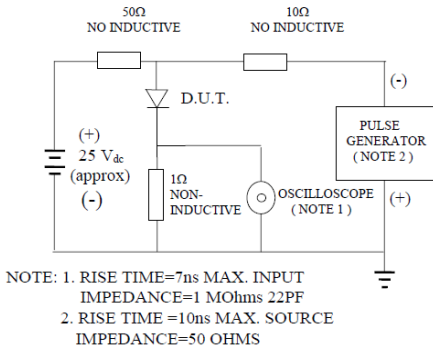


FIG. 2-TYPICAL FORWARD CURRENT DERATING CURVE

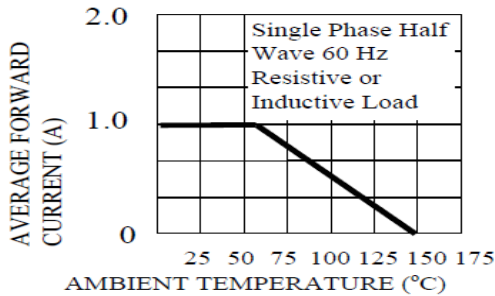


FIG. 3-TYPICAL REVERSE CHARACTERISTICS

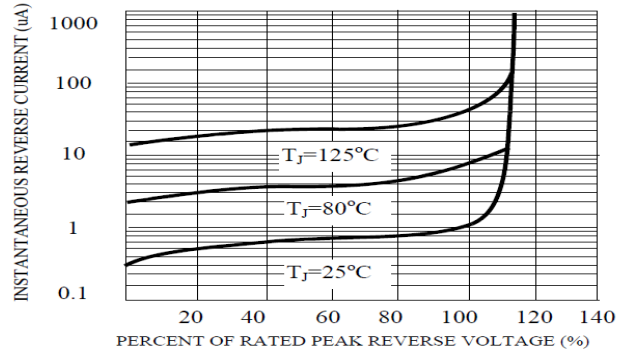


FIG. 4-TYPICAL INSTANTANEOUS FORWARD CHARACTERISTICS

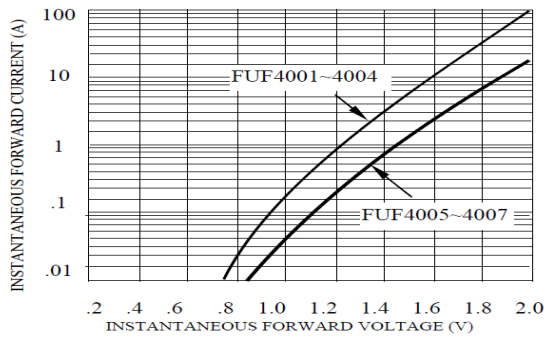
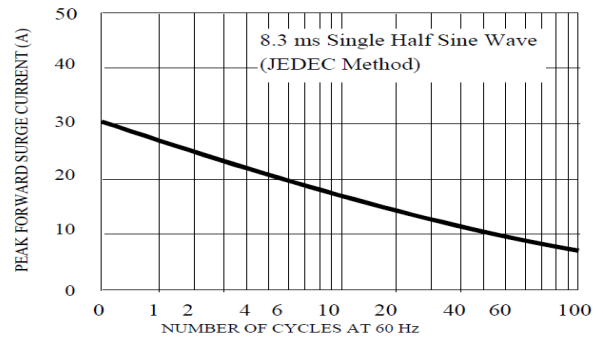


FIG. 5-MAXIMUM NON-REPETITIVE FORWARD SURGE CURRENT





FUF4001 THRU FUF4007 SPECIFICATIONS

Rev. A

