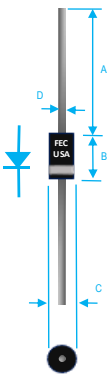


1A FAST RECOVERY PLASTIC RECTIFIER



Dim.	Value In (mm)	
	Min.	Max.
A	1.000[25.40]	→
B	0.166[4.23]	0.205[5.21]
C	0.080[2.03]	0.107[2.72]
D	0.028[0.71]	0.034[0.86]

PRODUCT FEATURES

1. FLAMMABILITY CLASSIFICATION: 94V-0
2. DIFFUSED JUNCTION
3. HIGH SURGE CURRENT CAPABILITY
4. CASE: TRANSFER MOLDED D0-41
5. DIMENSIONS IN INCHES AND (MILLIMETERS)
6. POLARITY: INDICATED BY CATHODE BAND
7. WEIGHT : 0.34 GRAMS
8. TERMINALS : PER MIL-STD-202, METHOD 208
9. ROHS

MAXIMUM RATINGS AND ELECTRICAL CHARACTERISTICS RATINGS AT 25°C AMBIENT TEMPERATURE UNLESS OTHERWISE SPECIFIED STORAGE AND OPERATING TEMPERATURE RANGE -55°C TO + 150°C. SINGLE PHASE, HALF WAVE, 60 HZ, RESISTIVE OR INDUCTIVE LOAD. FOR CAPACITIVE LOAD, DERATE CURRENT BY 20%

RATINGS	SYMBOL	VALUE	UNITS
MAXIMUM AVERAGE FORWARD RECTIFIED CURRENT 0.375"(9.5mm) LEAD LENGTH @ 55°C	IO	1	A
PEAK FWD SURGE CURRENT, 8.3ms HALF SINE-WAVE SUPERIMPOSED ON RATED LOAD	IFSM	30	A
TYPICAL JUNCTION CAPACITANCE(NOTE 1)	CJ	15	pF
TYPICAL THERMAL RESISTANCE (NOTE 2)	Rqja	50	°C/W
MAXIMUM FORWARD VOLTAGE	VF	1.3	V
MAXIMUM REVERSE CURRENT @ 25°C	IR	5	uA
MAXIMUM REVERSE CURRENT @ 100°C	IR	50	uA

1. MEASURED @ 1.0 MHZ AND APPLIED REVERSE VOLTAGE OF 4.0 V
2. BOTH LEADS ATTACHED TO HEAT SINK 20x20x1t(mm) COPPER PLATE @ LEAD LENGTH 5mm
3. REVERSE RECOVERY TEST CONDITIONS: IF=0.5A, IR=1.0A, IRR=0.25A
4. MAXIMUM FORWARD VOLTAGE AT IO DC

PART NUMBER	MAX RECURRENT PK REV VOLTAGE VRRM (V)	MAX RMS VOLTAGE VRMS (V)	MAX DC BLOCKING VOLTAGE VDC (V)	MAX REV RECOVERY TIME TRR (nS)
FR10-005	50	35	50	150
FR10-01	100	70	100	150
FR10-02	200	140	200	150
FR10-04	400	280	400	150
FR10-06	600	420	600	250
FR10-08	800	560	800	500
FR10-10	1000	700	1000	500

RATING AND CHARACTERISTIC CURVES

FIG. 1-TEST CIRCUIT DIAGRAM AND REVERSE RECOVERY TIME CHARACTERISTIC

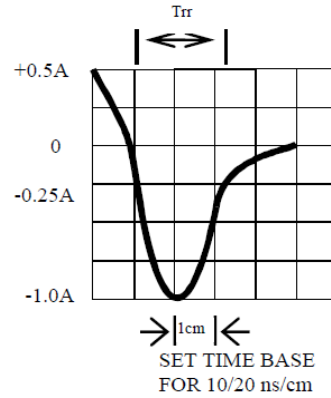
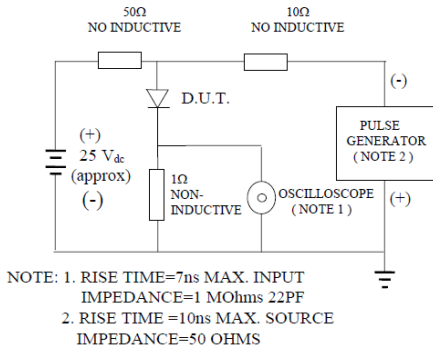


Fig. 2-MAXIMUM CURRENT DERATING CURVE

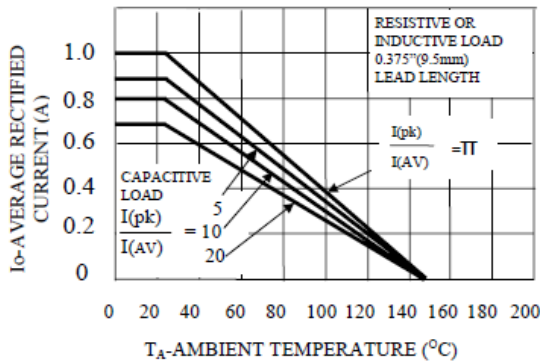


FIG. 3-TYPICAL JUNCTION CAPACITANCE

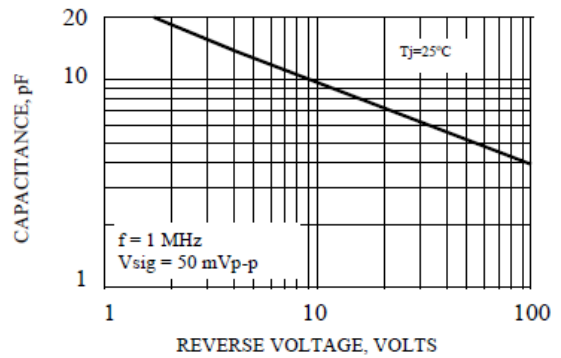


FIG. 4-TYPICAL REVERSE CHARACTERISTICS

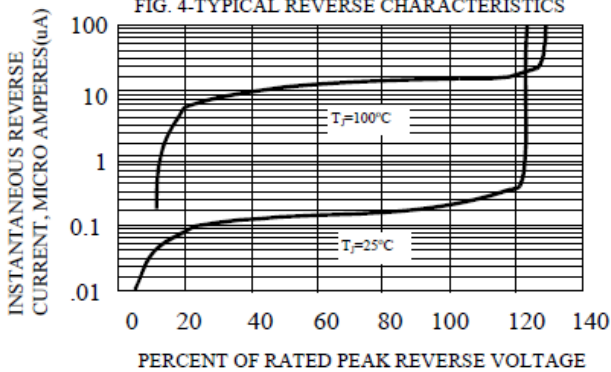
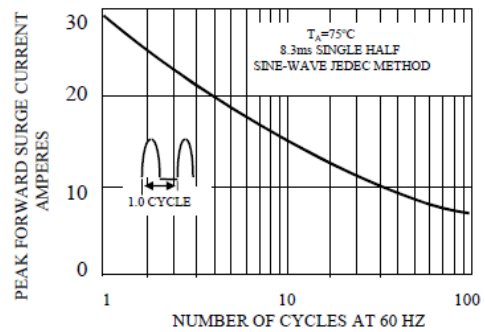


Fig. 5-MAXIMUM FORWARD SURGE NUMBER OF CYCLES





FR10-005 THRU FR10-10 SPECIFICATIONS

Rev. A

