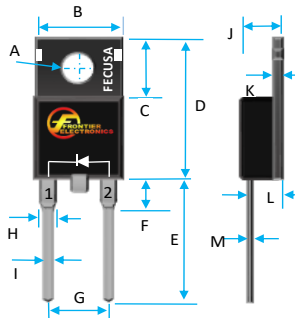


10.0A GLASS PASSIVATED EFFICIENCY FAST RECTIFIERS-50-600V



Dim.	Value In (mm)	
	Min.	Max.
A	0.139[3.53]	---
B	0.382[9.70]	0.404[10.26]
C	0.248[6.30]	0.272[6.91]
D	0.570[14.48]	0.610[15.49]
E	0.511[12.98]	0.543[13.79]
F	---	0.161[4.09]
G	0.195[4.95]	0.204[5.18]
H	---	0.060[1.52]
I	---	0.035[0.89]
J	---	0.189[4.80]
K	0.045[1.14]	0.054[1.37]
L	0.098[2.49]	0.114[2.90]
M	---	0.031[0.79]

PRODUCT FEATURES

1. FLAMMABILITY CLASSIFICATION: 94V-0
2. GLASS PASSIVATED CHIP JUNCTION
3. LOW LEAKAGE
4. LOW FORWARD VOLTAGE DROP
5. HIGH SURGE CURRENT CAPABILITY
6. CASE: JEDEC TO-220AC, MOLDED PLASTIC
7. DIMENSIONS IN INCHES AND (MILLIMETERS)
8. POLARITY: AS MARKED
9. WEIGHT : 2.05 GRAMS
10. TERMINALS : PER MIL-STD-202, METHOD 208
11. ROHS AND HALOGEN FREE

MAXIMUM RATINGS AND ELECTRICAL CHARACTERISTICS RATINGS AT 25°C AMBIENT TEMPERATURE UNLESS OTHERWISE SPECIFIED STORAGE AND OPERATING TEMPERATURE RANGE -55°C TO + 150°C. SINGLE PHASE, HALF WAVE, 60 HZ, RESISTIVE OR INDUCTIVE LOAD. FOR CAPACITIVE LOAD, DERATE CURRENT BY 20%

RATINGS	SYMBOL	VALUE	UNITS
MAXIMUM AVERAGE FORWARD RECTIFIED CURRENT @ 25°C	IO	10	A
PEAK FWD SURGE CURRENT, 8.3ms HALF SINE-WAVE SUPERIMPOSED ON RATED LOAD	IFSM	100	A
TYPICAL JUNCTION CAPACITANCE (NOTE2)	CJ	60	pF
MAXIMUM REVERSE CURRENT @ 25°C	IR	5	uA
MAXIMUM REVERSE CURRENT @ 100°C	IR	200	uA
MAXIMUM REVERSE RECOVERY TIME (NOTE1)	TRR	25	nS

1. REVERSE RECOVERY TIME TEST CONDITION, IF=0.5A, IR=1.0A, IRR=0.25A
2. MEASURED @ 1 MHZ AND APPLIED REVERSE VOLTAGE OF 4.0 VOLTS
3. MAXIMUM FORWARD VOLTAGE @ IO

PART NUMBER	MAX RECURRENT PK REV VOLTAGE VRRM (V)	MAX RMS VOLTAGE VRMS (V)	MAX DC BLOCKING VOLTAGE VDC (V)	MAX FWD VOLTAGE VF (V)	MARKING
EF10A05	50	35	50	0.98	EF10A05
EF10A10	100	70	100	0.98	EF10A10
EF10A20	200	140	200	0.98	EF10A20
EF10A40	400	280	400	1.25	EF10A40
EF10A60	600	420	600	1.9	EF10A60

RATING AND CHARACTERISTIC CURVES

FIG.1-TYPICAL FORWARD CURRENT DERATING CURVE

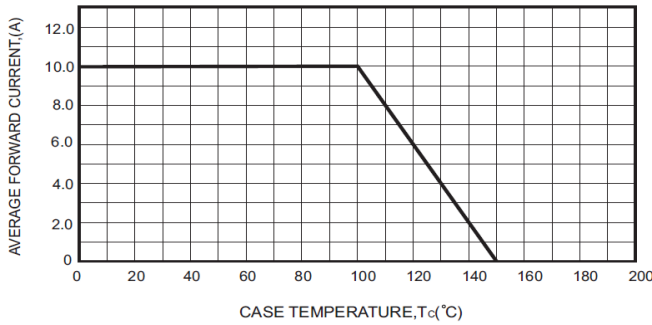


FIG.2-MAXIMUM NON-REPETITIVE FORWARD SURGE CURRENT

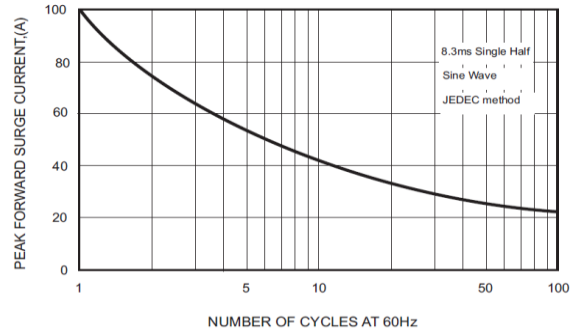


FIG.3-TYPICAL FORWARD CHARACTERISTICS

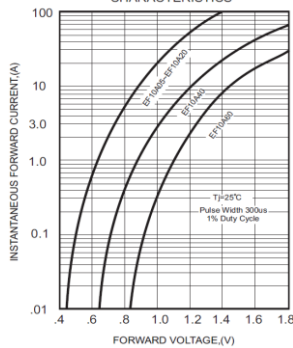


FIG.4 - TYPICAL REVERSE CHARACTERISTICS

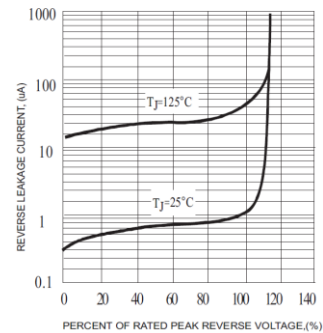
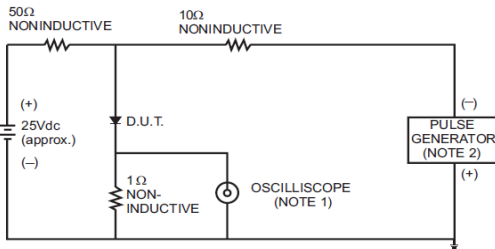


FIG.5- TEST CIRCUIT DIAGRAM AND REVERSE RECOVERY TIME CHARACTERISTICS



- NOTES: 1. Rise Time= 7ns max., Input Impedance= 1 megohm.22pF.
2. Rise Time= 10ns max., Source Impedance= 50 ohms.

