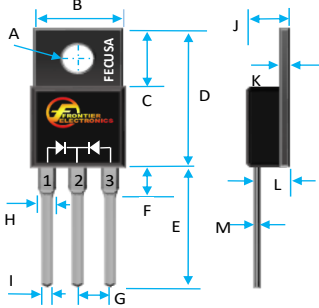


## 10.0A GLASS PASSIVATED EFFICIENCY FAST RECTIFIERS-50-600V



Dim.	Value in [mm]	
	Min.	Max.
A	0.141[3.58]	0.161[4.09]
B	0.382[9.70]	0.404[10.26]
C	0.248[6.30]	0.272[6.91]
D	0.570[14.48]	0.610[15.49]
E	0.511[12.98]	0.543[13.79]
F	---	0.161[4.09]
G	0.095[2.41]	0.105[2.67]
H	---	0.060[1.52]
I	---	0.035[0.89]
J	---	0.189[4.80]
K	0.043[1.09]	---
L	0.098[2.49]	0.114[2.90]
M	---	0.031[0.79]

### PRODUCT FEATURES

1. FLAMMABILITY CLASSIFICATION: 94V-0
2. GLASS PASSIVATED CHIP JUNCTION
3. LOW LEAKAGE
4. LOW FORWARD VOLTAGE DROP
5. HIGH SURGE CURRENT CAPABILITY
6. CASE: JEDEC TO-220AC, MOLDED PLASTIC
7. DIMENSIONS IN INCHES AND (MILLIMETERS)
8. POLARITY: AS MARKED
9. WEIGHT : 1.7 GRAMS
10. TERMINALS : PER MIL-STD-202, METHOD 208
11. ROHS AND HALOGEN FREE

MAXIMUM RATINGS AND ELECTRICAL CHARACTERISTICS RATINGS AT 25°C AMBIENT TEMPERATURE UNLESS OTHERWISE SPECIFIED STORAGE AND OPERATING TEMPERATURE RANGE -55°C TO + 150°C. SINGLE PHASE, HALF WAVE, 60 HZ, RESISTIVE OR INDUCTIVE LOAD. FOR CAPACITIVE LOAD, DERATE CURRENT BY 20%

RATINGS	SYMBOL	VALUE	UNITS
MAXIMUM AVERAGE FORWARD RECTIFIED CURRENT @ 25°C	IO	10	A
PEAK FWD SURGE CURRENT, 8.3ms HALF SINE-WAVE SUPERIMPOSED ON RATED LOAD	IFSM	80	A
TYPICAL JUNCTION CAPACITANCE (NOTE2)	CJ	30	pF
MAXIMUM REVERSE CURRENT @ 25°C	IR	5	uA
MAXIMUM REVERSE CURRENT @ 100°C	IR	250	uA
MAXIMUM REVERSE RECOVERY TIME (NOTE1)	TRR	25	nS

1. REVERSE RECOVERY TIME TEST CONDITION, IF=0.5A, IR=1.0A, IRR=0.25A
2. MEASURED @ 1 MHZ AND APPLIED REVERSE VOLTAGE OF 4.0 VOLTS
3. MAXIMUM FORWARD VOLTAGE @ IO
4. DUAL RECTIFIER CONSTRUCTION, POSITIVE CENTERTAP, 5.0A HALF WAVE AND 10.0A FULL WAVE RECTIFICATION

PART NUMBER	MAX RECURRENT PK REV VOLTAGE VRRM (V)	MAX RMS VOLTAGE VRMS (V)	MAX DC BLOCKING VOLTAGE VDC (V)	MAX FWD VOLTAGE VF (V)	MARKING
EF1005FCT	50	35	50	0.98	EF1005F
EF1010FCT	100	70	100	0.98	EF1010F
EF1020FCT	200	140	200	0.98	EF1020F
EF1040FCT	400	280	400	1.25	EF1040F
EF1060FCT	600	420	600	1.9	EF1060F

## RATING AND CHARACTERISTIC CURVES

FIG. 1-TYPICAL FORWARD CURRENT DERATING CURVE

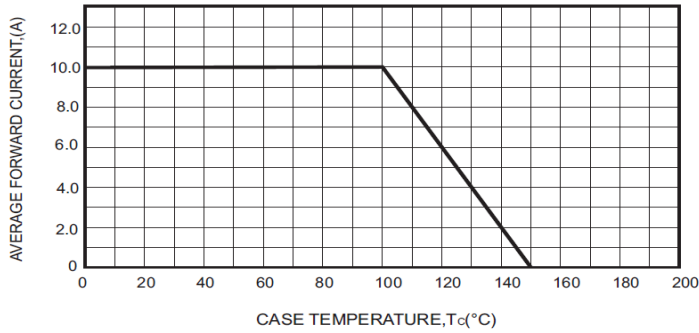


FIG. 2-MAXIMUM NON-REPETITIVE FORWARD SURGE CURRENT

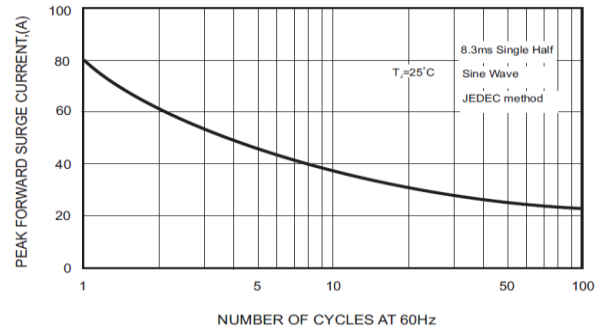


FIG. 3-TYPICAL FORWARD CHARACTERISTICS

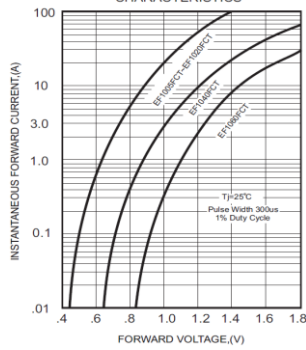


FIG. 4 - TYPICAL REVERSE CHARACTERISTICS

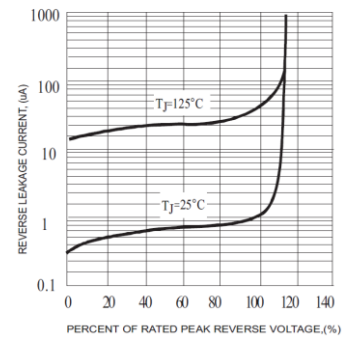
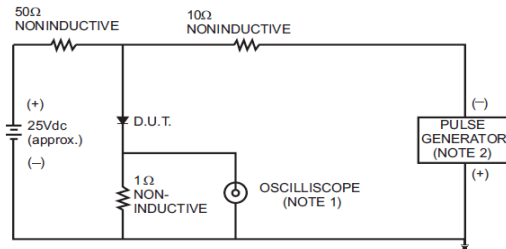


FIG. 5- TEST CIRCUIT DIAGRAM AND REVERSE RECOVERY TIME CHARACTERISTICS



- NOTES: 1. Rise Time= 7ns max., Input Impedance= 1 megohm. 22pF.  
2. Rise Time= 10ns max., Source Impedance= 50 ohms.

