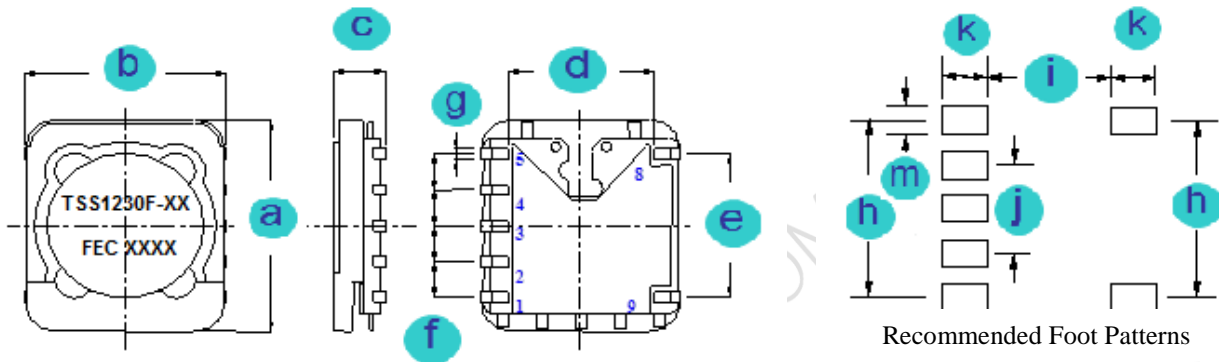


**A. Specifications:**

P/N	Suitable Frequency (KHz)	Mark	Max. Open Voltage (V rms)	Max. Lamp Watt. (W)	Efficiency
TSS1230F-01	90 ~ 140	TSS1230-01	750	1.2	75%
TSS1230F-04	90 ~ 140	TSS1230-04	N/A	1.2	75%

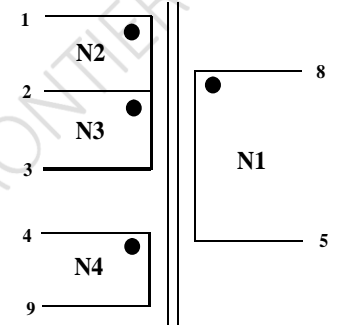
**B. Dimensions: mm (Inch)**

Series	a	b	c	d	e	f	g	h	i	j	k	m
TSS1230F	12.3 (0.484)	10.6 (0.417)	3.0 (0.118)	7.5 (0.295)	8.0 (0.315)	2.0 × 4 (0.079)	0.6 (0.024)	8.0 (0.315)	6.8 (0.268)	4.0 (0.157)	2.5 (0.098)	1.4 × 7 (0.055)
Tol.	Max.	Max.	Max.	Typ.	Typ.	Typ.	Typ.	Typ.	Typ.	Typ.	Typ.	Typ.



**C. Electrical Data:**

Winding	Start	Finish	TSS1230F-01		TSS1230F-04	
			L (@ 100KHz,1.0V)	DCR Ω (@ 25°C)	L (@ 100KHz,1.0V)	DCR Ω (@ 25°C)
N1	8	5	60.0 mH ± 15 %	270 ± 20 %	29.0 mH ± 15 %	200 ± 20 %
N2	1	2	11.0 uH ± 15 %	0.550 ± 20 %	5.50 uH ± 15 %	0.350 ± 20 %
N3	2	3	11.0 uH ± 15 %	0.550 ± 20 %	12.0 uH ± 15 %	0.550 ± 20 %
N4	4	9	0.67 uH ± 15 %	0.170 ± 20 %	15.5 uH ± 15 %	0.650 ± 20 %



**D. Insulation:**

Term	Item	Spec.	Condition
Hi-Pot	Coil to Coil	500 VAC / 1 Minute	@Cut off current=3mA
Isolation	Coil to Coil	100 MOHM Min.	@ 100 VDC

**E. Features:**

1. Low profile height: Maximum 3.0mm.
2. Drum / Ring type: Ferrite core (Ni – Zn).
3. High efficiency.
4. Surface mount.
5. Suitable for standard IR re-flows soldering.
6. Solder pads are gold plated.

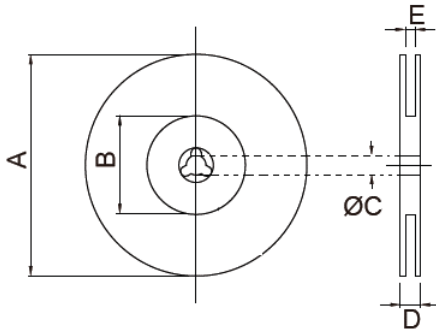
**F. Uses:**

1. Black Light power supplies transformer available.
2. FL Inverter.
3. PDA Inverter

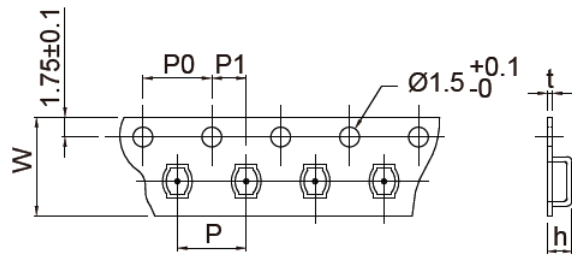
**G. Supplementary Information:**

1. Packaging Information

CARRIER TAPE REELS



TAPE DIMENSIONS (mm)



Plastic

Series P/N	Reel dimensions (mm)					Tape dimensions (mm)						Parts per reel	Quantity per	
	A	B	C	D	E	W	P	P0	P1	h	t	13"	Box	Carton
TSS1230F	340	20.2	13	30.4	24.4	24.0	16.0	4	2	3.10	0.30	1,000	1,000	8,000

2. RoHS Reflow Solder Profile:

Typical RoHS Reflow Profile

