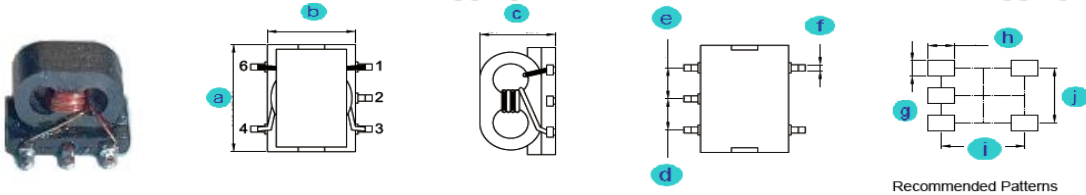


A. Electrical Specifications:

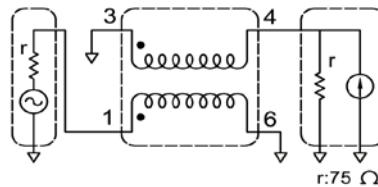
P/N	Winding Turns	Insertion Loss 1dB Max.
SBT151-04	4.5 Ts	@ 500~1800 MHz

B. Dimensions: mm (Inch)

Series	a	b	c	d	e	f	g	h	i	j
SBT151	3.80 (0.150)	4.10 (0.161)	3.60 (0.142)	1.27 (0.05)	1.27 (0.05)	0.5 (0.020)	0.75 (0.030)	1.65 (0.065)	3.17 (0.125)	2.54 (0.100)
Tol.	±0.38 (0.015)	±0.38 (0.015)	Max.	±0.38 (0.015)	±0.38 (0.015)	±0.15 (0.006)	Typ.	Typ.	Typ.	Typ.



C. Test Circuit:



Test Equipment : WILTRON 5411A

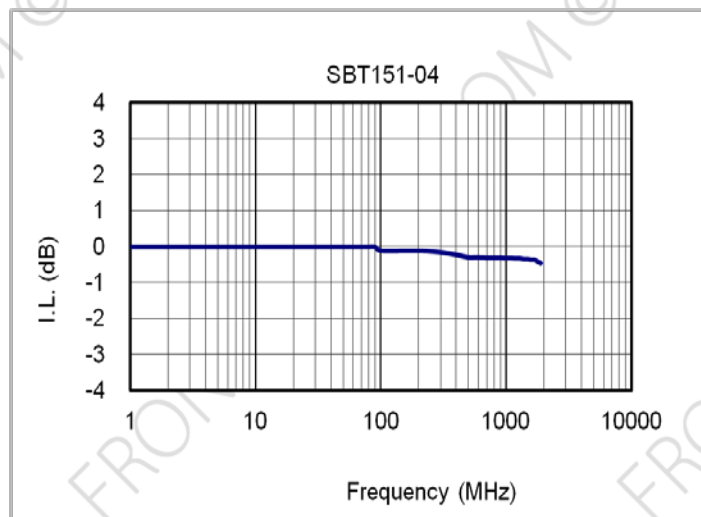
D. Features:

- a. Base pin terminal treated, allowing mounting 'as is' on a PCB.
- b. Custom specifications available.
- c. MSL: Level 1.

E. Applications:

Double balance mixers, broad-band transformers, impedance transformers, etc.

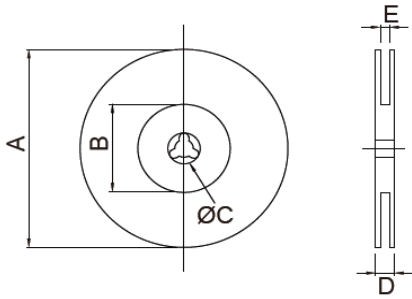
F. Characteristic Curve:



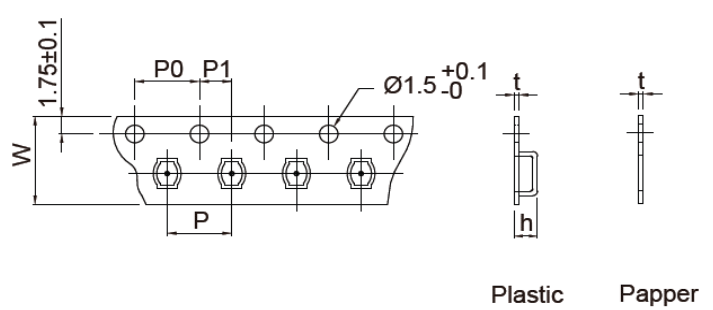
G. Supplementary Information:

1. Packaging Information

CARRIER TAPE REELS



TAPE DIMENSIONS (mm)



Plastic Paper

SMD Balun Transformers

Series P/N	Reel dimensions (mm)					Tape dimensions (mm)						Parts per reel		Quantity per	
	A	B	C	D	E	W	P	P0	P1	h	t	7"	13"	Box	Carton
SBT151	340	100	13	18.4	12.5	12	8	4	2	3.30	0.35	---	2,500	5,000	35,000

2. RoHS Reflow Solder Profile

Typical RoHS Reflow Profile

