



# CP2450K0607BT COUPLER SPECIFICATION

Rev. B

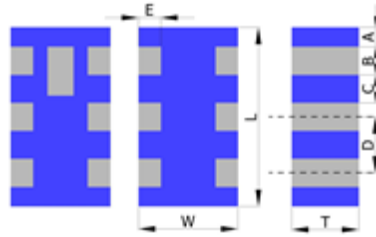
## PRODUCT FEATURES

1. Surface mount coupler with a small size of 1.6 X 0.8 X 0.6 mm, RoHS compliant.
2. Provide low insertion loss and high rejection rate.
3. Highly stable under temperature and humidity changes.

## RF CHARACTERISTICS

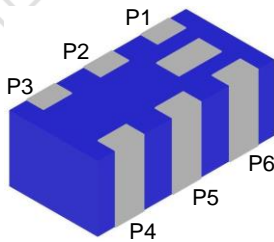
P/N CP2450K0607BT	Specification
Frequency range	2400-2700 MHz
Insertion Loss (max)	0.74 dB
VSWR	1.8 max
Impedance	50 Ω
Coupling in BW	10dB ± 1.0dB
Isolation in BW	32dB min
Operating temperature range	-40°C to +85°C
Max. Input Power	500mW

## PHYSICAL DIMENSIONS



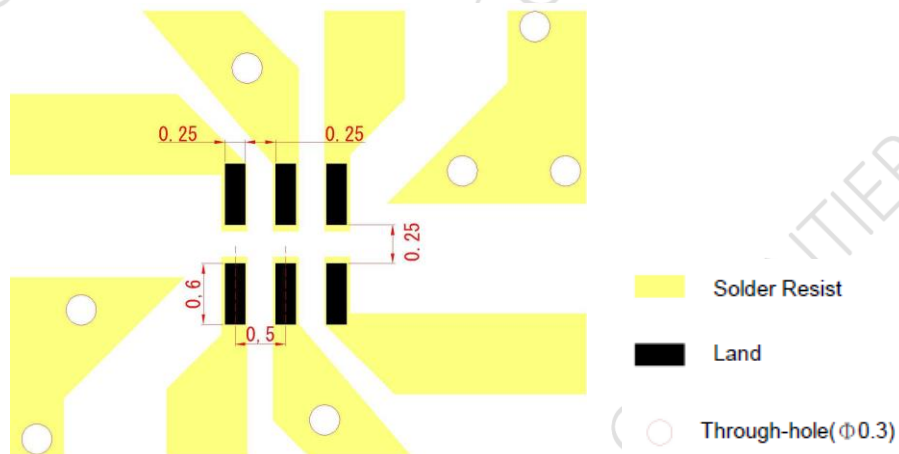
Symbol	Dimension (mm)
L	1.60 ± 0.10
W	0.80 ± 0.10
T	0.60 ± 0.10
A	0.20 ± 0.10
B	0.20 ± 0.10
C	0.30 ± 0.10
D	0.50 ± 0.10
E	0.20 ± 0.10

## TERMINAL CONFIGURATION



PIN	Connection	PIN	Connection
P1	IN	P4	TERMINATION
P2	GND	P5	GND
P3	COUPLING OUT	P6	OUT

## PCB DESIGN/LAYOUT CONSIDERATION



Note:

- Unit in mm
- Design trace width to be 50Ω impedance.



# CP2450K0607BT COUPLER SPECIFICATION

Rev. B

## Typical RF Performance

